

XE240LC Hydraulic Excavator



www.xcmg.com

XUZHOU CONSTRUCTION MACHINERY GROUP IMP.&EXP.CO.,LTD
Add:XCMG Headquarters,Xuzhou Economic Development Zone,Jiangsu,China 221004

www.xcmg.com

Please contact with our district agent:

Materials and specifications are subject to change without notice.

14-1140C

XE240LC Hydraulic Excavator

XE240L HIGHLIGHTS

- ◆ This model adopts the international advanced hydraulic system, in which the choice and the design optimization of the hydraulic units and system ensure that the complete unit embodies high reliability, high efficiency, and low energy consumption.
- ◆ This machined is equipped with hydraulic burst-proof valve to effectively maintain the lifting status of the boom and promote the safety.
- ◆ Equipped with electric fuel transfer pump to greatly facilitate the filling of fuel.
- ◆ Optional equipment of electric central lubrication to meet the market demands of the user.
- ◆ Equipped with traveling alarm to promote safety.
- ◆ The hydraulic system is equipped with left/right hand switching valve to adapt to the operation habits in North American market.
- ◆ This product is equipped with the XCMG independently developed controllers to optimize the overall performance, promote the working efficiency, and lower the fuel consumption.
- ◆ The power system adopts the Cummins environment-friendly and energy-saving engine, featuring strong power, low emission, and Euro-III emission standard compliance. In addition, the system design is optimized to achieve the perfect matching amongst the power performance, thermal equilibrium, and noise control of the complete machine.
- ◆ The design optimization in overall structure, working device, and layout of articulated joints guarantee the stability and powerful excavation force of the complete machine.
- ◆ TOPS and ROPS certified driver cab. It adopts the powerful imported air conditioner, featuring good heating/cooling effects and high reliability. Its reasonable and scientific human-machine engineering design maximize the operation comfort.
- ◆ TUVus and EMS certified.

MAIN SPECIFICATIONS

Operating Weight	24313
Standard Bucket Capacity	1.1 m ³
Engine Model	QSB6.7-C190
Type	Direct injection, four strokes, water cooling, turbo charged with air to air intercooler
No. Of Cylinders	6
Rated Power/Speed	142 kW (190HP)/2200 rpm
Displacement	6.7 L (416cu in.)
Travel Speed	5.2Km/h/3.5Km/h(3.2mph/2.2mph)
Max. Gradeability	58%
Swing Speed	12.1 rpm
Ground Pressure	49.7 kPa (7.20psi)
Bucket Dipping Force at Power Max	163 kN(36,644lb.)
Arm Crowd Force at Power Max	116 kN(26,078lb.)
Main Pump	2×variable-displacement axial-piston
Rate Flow	2×321 L/min(2×85.9gpm)
Max Pressure of System	31.6/34.3 MPa(4,567psi/4,973psi)
Max Pressure of Travel Equipment	34.3 MPa(4,973psi)
Max Pressure of Swing Equipment	25 MPa(3,625psi)
Pilot Press Setting	3.9 MPa(565psi)
Fuel Tank Capacity	400 L(105gal.)
Hydraulic Tank Capacity	240 L(63gal.)
Engine Lubrication	25 L(26gal.)



Engine: CUMMINS QSB6.7 142Kw(190HP)

- ◆ Certified to EPA Tier 3 emissions
- ◆ Auto-idle system
- ◆ Automatic belt tension device
- ◆ Batteries (two 12 volt)
- ◆ Coolant recovery tank
- ◆ Dual-element dry-type air filter
- ◆ Electronic engine control
- ◆ Enclosed fan guard (conforms to SAE J1308)
- ◆ Engine coolant to -340F (-370C)
- ◆ Fuel filter with water separator
- ◆ Full-flow oil filter
- ◆ Turbocharger with charge air cooler
- ◆ Muffler, under hood, with vertical curved end
- ◆ 500-hour engine oil-change interval
- ◆ Engine-oil-sampling valve

Hydraulic System

- ◆ Reduced-drift valve for boom down, arm in
- ◆ Auxiliary hydraulic valve section
- ◆ Spring-applied, hydraulically released automatic swing brake
- ◆ Auto power lift
- ◆ Hydraulic filter restriction indicator kit
- ◆ Auxiliary hydraulic lines
- ◆ Control pattern-change valve

Front Attachments

- ◆ Centralized lubrication system
- ◆ Dirt seals on all bucket pins
- ◆ Standard boom 19ft. 9 in. (6 m) and arm 9ft. 9 in. (2.96 m)
- ◆ Reinforced resin thrust plates
- ◆ Arm, 8ft. 3 in. (2.5 m)

Upperstructure

- ◆ Right- and left-hand mirrors
- ◆ Remote-mounted engine oil and fuel filters

Lights

- ◆ Work lights: Halogen/Two mounted on boom/One mounted on frame

Undercarriage

- ◆ Planetary drive with axial piston motors
- ◆ Propel motor shields
- ◆ Spring-applied, hydraulically released automatic propel brake
- ◆ Track guides, front idler and center
- ◆ Upper carrier rollers (2)
- ◆ Two-speed propel with automatic shift
- ◆ Sealed and lubricated track chain
- ◆ Triple semi-grouser shoes, 24 in. (600 mm)
- ◆ Triple semi-grouser shoes, 28 in. (700 mm)
- ◆ Triple semi-grouser shoes, 32 in. (800 mm)



Operator's Station

- ◆ Adjustable independent control positions (levers-to-seat, seat-to-pedals)
- ◆ AM/FM radio
- ◆ Auto climate control/air conditioner, with heater and pressurizer
- ◆ Coat hook
- ◆ Deluxe suspension PVC seat with adjustable armrests
- ◆ Floor mat
- ◆ Front windshield wiper with intermittent speeds
- ◆ Gauges (illuminated): Engine coolant/Fuel
- ◆ Horn, electric
- ◆ Hour meter, electric
- ◆ Hydraulic shut off lever, all controls
- ◆ Interior light
- ◆ Cup holder
- ◆ Mode selectors (illuminated): Power modes—three / Travel modes—two with automatic shift / Work mode—two
- ◆ Multifunction, color LCD monitor with: Multiple-language capabilities / Main-tenance tracking/Clock / System monitoring with alarm features: Auto-idle indicator, engine air cleaner restriction indicator light, engine check, engine coolant temperature indicator light with audible alarm, engine oil pressure indicator light with audible alarm, low-attarator-charge indicator light, low-fuel indicator light, fault-code alert indicator, fuel-rate display, work-lights-on indicator, and work-mode indicator
- ◆ Monitor system with alarm features: Hydraulic oil filter restriction indicator light
- ◆ Motion alarm with cancel switch (conforms to SAE J994)
- ◆ Power-boost switch on right console lever
- ◆ SAE two-lever control pattern
- ◆ Seat belt, 2 in. (57 mm)
- ◆ Seat belt, 3 in. (76 mm)
- ◆ Transparent tinted overhead hatch

HYDRAULIC EXCAVATOR

Strong, fuel-efficient, low noise power systems

- ◆ The imported original Cummins engine has a strong power, which can meet high efficient operational requirements;
- ◆ The exact matching design coupled with advanced energy-saving control make the machine has less fuel consumption;
- ◆ The machine has low emissions, which meets Europe III standard;
- ◆ The new cooling fan and large-scale adoption of silencer, so that the noise is reduced;
- ◆ The advanced turbocharger increasing pressure technology is used to enhance the adaptation of the machine on highland;
- ◆ The automatic preheating system can improve the working ability of the machine in low temperature;
- ◆ The unique funnel mouth fan enclosures can greatly enhance inlet air flow of the engine and the cooling capacity of the system so that the machine can work continuously and efficiently;
- ◆ The re-start preventing system can avoid mistake operation and improve the safety of the machine.

The advanced hydraulic system

- ◆ The high-end configurations: hydraulic pump, main valve, rotary motor, travel motor, cylinder, pilot control valve and other components, are used international renowned brands (KPM + KYB), ensured the product quality;
- ◆ The integrated latest research results can reduce energy consumption, faster response and higher efficiency;
- ◆ The locked function of the boom/arm to prevent the boom and arm sinking to extend its time in the medium position;
- ◆ The arm back oil regeneration: the arm should be moved back fast and stable; Strong and precise rotary control: has improved the absorption characteristics of the vibration, to ensure the stop action of rotation more accurate and smooth; by increasing the torque reserve, giving the machine more robust rotation ability;
- ◆ The cylinder has a buffering function: the boom cylinder and arm cylinder is designed with the buffer, which can reduce the machine vibration and shock, reduce noise and prolong tank life;
- ◆ Double-pump and convergence technology: this can increase the flow that the main valve supplies to the boom, the arm cylinder to increase operating speed;
- ◆ The hydraulic damping device is set on the walking pilot valve: this can make the machine more smooth when it running and stop.



Rugged and high-reliability

- ◆ To strengthen the X-frame: To improve the design of crawler frame cross-sectional shape, so that the soil around the track frame is less likely to pile up, the track carrying wheel is more difficult to wear, to improve the durability and dependability of the machine.
- ◆ To increase the size of the box-shaped structure in X-frame, improve the performance of section, so that the machine is more able to adapt to heavy-duty operational requirements.
- ◆ To match enhanced boom: The boom is used with large cross-section, high-rigidity box-shaped structure, through optimizing procession, to reduce the negative intensity welding site, to meet the construction requirements of heavy-load operations;
- ◆ The important hinged parts are all forgings structure, to prevent improving the strength at the same time of focusing the stress.
- ◆ The strengthened design of the boom root, to enlarge the sleeve and increase the thickness of the plate to ease the stress, improving durability.
- ◆ The arm: The forging structure is used at the important hinged parts, through changing the shape and thickness of the plate for easing the stress and improving durability. (Optional long bucket rod or short arm)
- ◆ To increase the wear resistance performance of the bucket: The bucket cutting boards are made of special wear-resistant steel plate, which is suitable for heavy operational requirements, coupled with wear-resistant-type bucket teeth, side teeth, to improve the use performance of the machine.
- ◆ The thickness increased steel board and increase the side strengthens board, to improve wear resistance performance;
- ◆ The flat-bottomed bucket is used to carry out smooth operations, the trimming surface is tidy flat. (Optional 1.0m³ rock bucket)
- ◆ To enhance the upper rotary platform, through layout reasonably, the rigidity and strength should be greatly enhanced, the overall balance is more enhanced, to ensure the machine is more stable during operation;
- ◆ The platform edge beam is designed to D-shaped structure, which can resist external strong impact.
- ◆ The increasing counterweight: To increase the quality of weight: it has been improved compared with the same level of models, the machine has better stability.
- ◆ The bushing: The connecting parts of the boom and the arm pin, the high strength wear-resistance bush is used and can be used for a long time.

Intelligent Operation and display

- ◆ The new ESS microcomputer control system developed with the international well-known companies uses fully the engine power, which can make the machine keep the best efficiency and economy in different operating state.

- ◆ The system is set with three operating modes, the system can work under the modes of H (heavy), S (standard), L (light load) mode.

- ◆ Auto-Idle feature: Open the auto-Idle function, if the machine doesn't work in 5 seconds, the engine stop running automatically, this can save fuel and reduce noise.
- ◆ The multi-function LCD monitor large-screen, digital display can comprehensive monitors the working state of the engine (speed, water temperature, oil level, etc.), the operating information of the machine can be checked at any time.
- ◆ The function switch is focused on the control panel, through the point-touch buttons, which can be chosen easily.
- ◆ The GPS satellite positioning system is used for remote diagnosis, fault warning, and maintenance and automatic reminder.

Easy to service and maintain

- ◆ The focused lubrication system is facilitating to repair.
- ◆ The oil-water separator, fuel filter, oil filter, pilot oil filter are at the place easy to change on the ground.
- ◆ The safety net is set outside the radiator to effectively prevent inhalation of fly batt and other debris, convenient demolition, clean easier.
- ◆ The large-capacity fuel tank can provides longer time of perating.
- ◆ The oversized toolbox is facilitate for the items to be stored.
- ◆ The period of repairs and maintenance is longer: Using high-quality parts can extend service life, reduce maintenance time of the machine

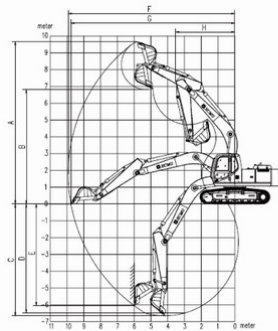
Operating Environment

- ◆ The cab is comfortable, safe, wide vision
- ◆ The strengthened steel is used for a pillar to improve the overall rigidity, reducing vibration and noise;
- ◆ Full-scope expand horizons and enlarge the front windows, side windows and rear window to ensure the broad vision to substantially reduce the blind spots, the operation more secure, and efficient;
- ◆ To increase the glass of the day windows to improve visibility upward and increase ventilation;
- ◆ The more humanized designs; the tempered glass is used for the windows and doors, flexible good safe belts and shading plate that prevent direct sunlight;
- ◆ All of the operations and controls are designed according to the theory of man-machine engineering;
- ◆ The operating handle is easily to control;
- ◆ The luxury floating high back seats can be multi-directional adjusted, and can be moved separately or moved together with the control boxes on both sides, so as to the driver can easily achieve the most comfortable operating posture;
- ◆ The six points silicone rubber is used for bearing, so that greatly reduced vibration and noise, the driver fatigue is reduced and improved work efficiency;
- ◆ The imported original large-capacity cold and warm air-conditioning, which can ensure rapid heating and cooling in the room.



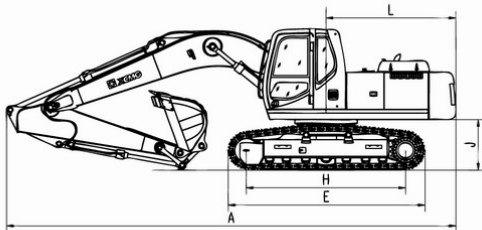
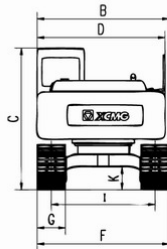
DIMENSIONS

A	Max Digging Height	9,670mm (380in.)
B	Max Dumping Height	6,975mm (274in.)
C	Max Digging Depth	6,920mm (272in.)
D	Max Digging Depth Of Cut For(B'level)	6,720mm (264in.)
E	Max Vertical Wall Digging Depth	6,165mm (242in.)
F	Max Digging Reach	10,270mm (404in.)
G	Max Digging Reach At Ground Level	10,090mm (397in.)
H	Min Swing Radius	3,870mm (152in.)



DIMENSIONS

A	Overall Length	10,160mm(40in.)
B	Overall Width	3,190 mm (125in.)
C	Overall Height	3,050mm (120in.)
D	Overall Width Of Upperstructure	2,830 mm (111in.)
E	Track Length	4,640mm(182in.)
F	Overall Width Of Undercarriage	3,190mm (125in.)
G	Standard Track Shoe Width	600mm (23in.)
H	Track Length On Ground	3,842mm (151in.)
I	Track Gauge	2,590mm (101in.)
J	Clearance Under Counterweight	1,118mm (43in.)
K	Ground Clearance	485 mm (19in.)
L	Tail Swing Radius	2,940mm (115in.)



LIFT CAPABILITIES

Hydraulic excavator lift capacity chart of Xuzhou Xugong Excavator Machinery Co., Ltd.
XE240LC

Do not attempt to lift or hold any load that is greater than these rated values at their specified lift-point radius and height. The lift point is located at the bucket lifting eye.

Lph (m)	Rated lift capacity – Over end (kg)				Lift capacity at maximum radius
	1.5	3	4.5	6	
6				3754	2265
4.5				3365	2166
3			5168	3056	1985
1.5			4375	2684	1799
Grade			*10474	2433	1600
-1.5		10144	3892	2321	1662
-3		10461	3978	2358	1786
-4.5		11142	4287		2719

Capacities marked with an asterisk(*) are limited by hydraulic capacities.

Lph (m)	Rated lift capacity – Over side (kg)				Lift capacity at maximum radius
	1.5	3	4.5	6	
6				2472	1440
4.5				2125	1350
3			3016	1865	1188
1.5			2374	1541	1020
Grade			2062	1323	894
-1.5		4312	1983	1225	842
-3		4515	2053	1256	965
-4.5		4952	2303		1532

Capacities marked with an asterisk(*) are limited by hydraulic capacities.

The mass of slings and any auxiliary lifting devices shall be deducted from the rated load to determine the net load that may be lifted. Lift capacities are based on the machine standing on a firm, uniform supporting surface. The user shall make allowances for job conditions such as soft or uneven ground. The operator should be fully acquainted with the operator's manual and the operating safety manual furnished by the manufacturer before operating the machine.

NOTE 1 Lift capacities shown are without the power boost feature engaged.

NOTE 2 Lift capacities shown are not exceed 75% of minimum tipping loads or 87% of hydraulic capacities.

NOTE 3 The least stable position is over the side.

NOTE 4 Lift capacities apply only to the machine as originally manufactured and normally equipped by the manufacturer.

NOTE 5 Lift capacities are in compliance with ISO 10567:2007.