



# QY25K5

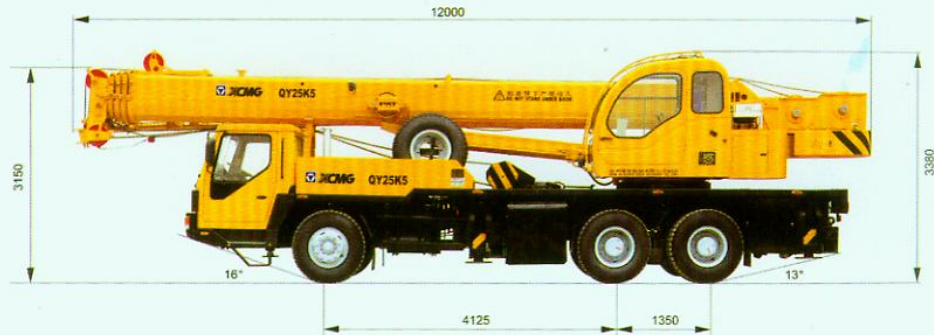
## HYDRAULIC TRUCK CRANE



Max.Total Rated Lifting Load	25t
Full-extend Boom Lifting Height	38.6m
Full-extend Boom+Jib Lifting Height	47.6m

# QY25K5

## FULL HYDRAULIC TRUCK CRANE



### Weight

Dead weight in travel state	31000kg
Axle load	
Front axle	6400kg
Rear axle	24600kg

### Dimensions

Overall length	12000mm
Overall width	2500mm
Overall height	3380mm

### Power

Engine model	6CL280-2	SC8DK280Q3
Engine rated putout	206/2200kW/(r/min)	206/2200kW/(r/min)
Engine rated torque	1170/1400N.m/(r/min)	1112/1400N.m/(r/min)
Engine rated speed	2200r/min	2200r/min

### Travel

Max.travel speed	75km/h	75km/h
Min.turning diameter	22m	22m
Min.ground clearance	260mm	260mm
Approach angle	16°	16°
Departure angle	13°	13°
Braking distance(at 30km/h)	10m	10m
Max.gradeability	30%	30%
Fuel consumption of 100km	~ 37L	~ 37L

### Lifting performance

Max.total rated lifting load	25t
Min.rated working radius	3m
Turning radius at swing table tail	3065mm
Max.load moment	
Base boom	961kN.m
Full-extend boom	450kN.m
Full-extend boom+Jib	436kN.m
Outrigger extension distance	
Longitudinal/Lateral	4.8/6.0m
Lifting height	
Base boom	10.2m
Full-extend boom	38.6m
Full-extend boom+Jib	47.6m

### Working speed

Boom raising	75s
Boom telescoping time	
Full-extending	150s
Max.slewing speed	2.5r/min
Outrigger telescoping time	
Outrigger beam extending/retracting synchronously	35/30s
Outrigger jack extending/retracting synchronously	40/35s
Hoisting speed(single rope)	
Main winch with full load/no load	75/150m/min
Auxiliary winch with full load/no load	75/125m/min

## Total rated lifting load for boom [Table 1]

Full-extend outrigger, without the 5th outrigger, boom at the side or the rear, or with the 5th outrigger. 360° swing

Working radius(m)	Base boom 10.1m		Mid-extend boom 13.65m		Mid-extend boom 17.2m		Mid-extend boom 22.52m		Mid-extend boom 27.85m		Mid-extend boom 33.18m		Full-extend boom 38.5m	
	Lifting Load(kg)	Lifting Height(m)	Lifting Load(kg)	Lifting Height(m)	Lifting Load(kg)	Lifting Height(m)	Lifting Load(kg)	Lifting Height(m)	Lifting Load(kg)	Lifting Height(m)	Lifting Load(kg)	Lifting Height(m)	Lifting Load(kg)	Lifting Height(m)
3.0	25000	10.2	22000	14.0										
3.5	25000	9.9	21500	13.8										
4.0	24200	9.6	20000	13.6	17000	17.4								
4.5	21800	9.3	18000	13.4	16000	17.2	12000	22.8						
5.0	19100	8.9	16500	13.1	15000	17.0	11400	22.7	9500	28.2				
5.5	17300	8.4	15000	12.8	14000	16.8	10800	22.5	8800	28.0				
6.0	15800	7.9	13500	12.5	13000	16.6	10400	22.3	8400	27.9	6600	33.4		
6.5	13800	7.4	12200	12.2	12200	16.3	9900	22.2	8000	27.8	6200	33.3		
7.0	12200	6.7	11200	11.8	11500	16.1	9400	22.0	7600	27.6	6000	33.2	5000	38.6
8.0	10500	4.8	10500	11.0	10200	15.5	8500	21.5	7300	27.3	5600	32.9	4600	38.4
9.0			8600	9.9	8430	14.8	7800	21.0	6600	26.9	5300	32.6	4300	38.1
10.0			7000	8.6	6930	14.0	7100	20.5	6100	26.5	4900	32.2	4000	37.8
11.0			5900	6.8	5760	13.0	6370	19.9	5600	26.0	4600	31.8	3800	37.5
12.0					4830	11.9	5420	19.2	5200	25.5	4300	31.4	3500	37.1
13.0					4070	10.5	4660	18.4	4700	24.9	4000	31.0	3370	36.8
14.0					3440	8.7	4020	17.5	4260	24.3	3700	30.4	3160	36.3
15.0					2800	6.3	3480	16.5	3720	23.6	3400	29.9	2960	35.9
16.0							3020	15.4	3260	22.8	3100	29.3	2850	35.4
18.0							2260	12.5	2500	21.0	2720	28.0	2550	34.3
20.0							1680	8.1	2010	18.9	2130	26.4	2160	33.1
22.0									1540	16.2	1660	24.6	1820	31.6
24.0									1160	12.5	1380	22.4	1450	30.0
26.0											1060	19.8	1140	28.1
28.0											780	16.5	880	25.9
30.0											550	11.8	660	23.3
32.0													480	20.2
34.0													320	16.2
Parts of fine	10		10		6		5		4		3		3	
Min.boom angle	24°		26.6°		19°		19.3°		25.1°		19.6°		23.8°	
Max.boom angle	66.6°		73°		73.1°		75.9°		77.6°		77.9°		78°	

## Total rated lifting load for jib [Table 2]

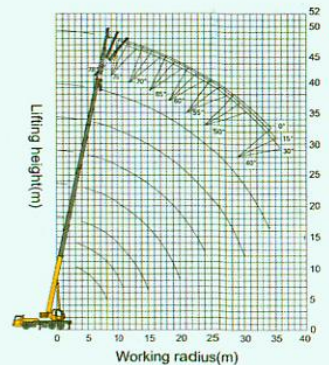
Full-extend outrigger, without the 5th outrigger, boom at the side or the rear, or with the 5th outrigger. 360° swing

Boom angle (°)	Boom 38.5m			Jib 8.3m					
	0°			15°			30°		
	Lifting Load (kg)	Working Radius (m)	Lifting Height (m)	Lifting Load (kg)	Working Radius (m)	Lifting Height (m)	Lifting Load (kg)	Working Radius (m)	Lifting Height (m)
78	2800	10.7	47.6	2500	12.1	47.2	1900	13.4	46.1
75	2800	13.1	47.3	2400	14.4	46.4	1750	15.6	45.2
72	2750	15.3	46.4	2200	16.7	45.5	1700	17.8	44.2
70	2650	16.8	45.8	2100	18.2	44.8	1600	19.3	43.5
65	2150	20.4	44.1	1800	21.7	42.9	1500	22.7	41.5
60	1800	23.9	42.1	1600	25.1	40.8	1400	26.1	39.2
55	1200	27.2	39.7	1140	28.3	38.3	1050	29.1	36.6
50	800	30.2	37.1	750	31.3	35.6	700	31.9	33.8
40	280	35.6	31.1	260	36.4	29.4	250	36.8	27.6

Hook block weight 55kg

## Notes to the Table 1 and Table2:

- The data given in the tables are the maximum lifting capacity when the crane is set up on level and firm ground.
- The total rated lifting loads include the weight of hook block and slings.
- The working radius in the tables are the actual values including the deflection of boom under load.
- The lifting operation is only permissible under the condition of wind force 7.
- The lifting height in the tables is for reference, and carry out lifting operation according to the load moment limiter.
- Extend the 5th outrigger before 360° full swing, otherwise load lifting over front is not permissible.
- The total rated lifting loads for single top(auxiliary boom sheave) are the same as those for main boom, but the max. lifting load must not exceed 2800kg.
- When the boom length and the working radius in the tables are different, take the next boom length and working radius.
- When using boom for lifting but with jib attached, the total rated load for boom should be deducted at least 400kg.
- Before lifting, first extend fully the 2nd boom sections, then the 3rd, 4th and 5th boom sections. After lifting, first retract the 3rd, 4th and 5th boom sections, then the 2nd boom section.
- The max single line pull for main and auxiliary winches is 28000N. The main winch rope length is 165m and the auxiliary winch rope length is 105m.
- The max supporting force for outrigger is 300000N.



▲ Lifting height curves

# QY25K5 FULL HYDRAULIC TRUCK CRANE

- Adoption of several national patents and proprietary technology.
- 5-section boom of all-round octagonal profile, larger working range.
- Single cylinder for front support elevating, low center of gravity and good stability.
- Full-width driver's cab and newly-designed operator's cab with broaden view, convenient for operation.
- Swing system with free-sliding function can automatically align to load. Pinion offset makes meshing clearance easy to adjust.
- New material and new structure are used to minimize the total weight and maximize the whole vehicle performances. Main performances are in the leading position in the industry.
- Hydraulic pilot control system implements all operations precisely with softly pushing the two joysticks on armrest. (mechanical control is requested for option.)
- Hydraulic valve block is integrated modular designed, little pressure loss and high work efficiency.
- Counterbalance valve designed with international technology, oil filter, anti-cavitation device and plug in hydraulic circuit make operation more reliable.
- Well-equipped safety devices such as automatic load moment limiter, hoist limit switch, wire rope over-release cut-out device, make operation more safe.
- Air conditioners are available for crane carrier and superstructure.
- Environmental and powerful engine is equipped with the crane, strong drive and good passing-ability.
- CE marked model QY25K5(CE) with original Benz engine model OM906LA, 205kw/2200rpm/1100Nm is available.
- QY25K5 CE is optional.

## XUZHOU CONSTRUCTION MACHINERY GROUP IMP. & EXP.CO.,LTD.

Add: XCMG Headquarters, Xuzhou Economic Development Zone, Jiangsu, China 221004

[www.xcmg.com](http://www.xcmg.com)

**Please contact with our district agent:**

**Materials and specifications are subject to change without notice.**