

 **XCMG**
徐工集团



K系列轮式装载机
K SERIES WHEEL LOADER
LW800K



 **徐州工程机械科技股份有限公司**
XUZHOU CONSTRUCTION MACHINERY SCIENCE & TECHNOLOGY CO.,LTD.



LW800K 高强王 FOR ROBUSTNESS

产品简介

LW800K轮式装载机是徐工全力打造的一代K系列装载机的主导机型之一。采用全方位弹性悬挂动力传动系统，适应性强；具有节能技术的双泵合流、自动卸荷液压先导控制系统，电液控制的变速操纵系统，使整机操作轻便灵活；全新优化设计高强度前、后车架，适用于重载工况作业；全液压湿式制动，作业、行驶安全可靠；增压型新风换气功能的大玻璃驾驶室，成型注塑的柔性装饰，可调节转向柱、智能电子监视系统，布局合理，视野开阔，操作舒适。

The LW800K is one of the leading models in the K series, a new generation of wheel loaders that XCMG tries its best to build for its customers. Viscously mounted in an all-round way to reduce shock and vibration, the power transmission system enables the machine to provide superior adaptability in demanding operating conditions. Energy-saving dual-pump flow converging and automatic pilot pressure unloading control system, together with electro-hydraulic shift control system provides ease of operation. All-new optimized front and rear frame design increases structural strength to suit heavy-duty applications. Fully hydraulic wet-disc brake assures safe driving and operation. The new roomy operator's cab is designed with ergonomics and operator comfort in mind including pressurized ventilation system with cooling and heating available, in-mould interior decoration, maximized visibility with floor-to-ceiling glass, adjustable steering column, integrated instrument panel and easily accessible controls.

性能特点

卓越的性能

Outstanding Performance

- 双泵合流系统，液压流量放大转向，单手柄先导操纵，轻便灵活。
- Dual-pump flow converge system, hydraulic steering with flow amplification and single pilot-operated joystick work together for easy operation.
- 转向限位为液控、机械双重限位，液控限位优于机械限位，减少冲击。
- Steering limit is hydraulically and mechanically controlled. Hydraulic control takes priority over mechanical limit for reduced impact.
- 全液压湿式制动，低压保护、紧急制动与停车制动二合一，保您作业行车安全。
- Fully hydraulic wet-disc type brake, low pressure protection and parking brake with integrated emergency braking function offer maximum drive and operation safety.
- 采用电磁定位技术，使本机具有自动放平功能，减少驾驶员的工作强度，提高工作效率。
- Electromagnetic positioning technology provides easier bucket control. Bucket positioner maintains automatic bucket levelling to assist the operator for increased productivity.
- 智能独立散热系统可以使机器根据工况的不同改变风扇转速，节能，提高机器的经济性。
- Intelligent independent heat dissipation system matches fan speed to load for increased fuel economy.
- 集中润滑系统，保证各摩擦副持久正常运行。
- Centralized lubrication system assures clutch plates work properly for higher durability.
- 长轴距，铰接中心对中布置，整机稳定性好。
- Long wheelbase and center point frame articulation provide optimum machine stability.

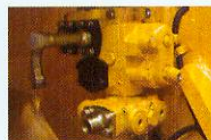
久经考验的部件

Field-proven Components

- 进口CUMMINS QSM11电喷、涡轮增压、空空中冷发动机、电启动、电熄火，排放满足欧美排放法规TIER-3阶段要求。
- Power is provided by a turbocharged, air-to-air after cooled engine that is Tier III/Stage IIIA certified. The engine features electronically controlled common-rail fuel injection system that provides precision fuel delivery for more efficient and cleaner combustion, resulting in combined virtues of outstanding engine performance, enhanced fuel economy, reduced emissions.
- ZF电液控制变速箱，性能先进，可靠性强，换挡轻松；KD档功能减少作业换挡频率，提高作业效率。
- ZF electrohydraulically controlled transmission offers smooth shifting, outstanding performance and high reliability. KD function reduces the number of gearshift for enhanced productivity.
- ZF AP-420/R湿式驱动桥，配有限滑差速器，免维护多片湿式制动片，延长了桥的使用寿命。
- ZF AP-420/R wet-type axle is fitted with limited slip differential and maintenance-free multiple wet-type brakes for extended life.
- 制动系统、液压系统、润滑系统主要元件采用国际知名品牌，提高系统可靠性。
- Key components of the braking system, hydraulic system and lubrication system are sourced from world-renowned companies for improved reliability.
- 电器系统采用电子监控，插接件采用全密封型插接件，在整车上方便装配、维修并且避开易淋水、溅水的位置固定、插接。
- Electrical system uses electronic monitoring. Connectors are fully sealed and fitted in easily accessible locations for easier assembly and servicing.



单手柄操纵
Single Joystick



流量放大阀
Flow-amplifying Valve



液控限位
Hydraulic Steering Limit



独立散热
Independent Heat Dissipation



集中润滑
Centralized Lubration



双泵合流
Dual-pump Merge



力士乐制动元件 Rexroth Braking Components

徐工09款装载机，全面强化，全面升级。

舒适的操作环境

Comfortable Operator Environment

- 超大空间新型驾驶室，密封性好，视野开阔。
- New roomy operator cabin is fully enclosed, offering maximum visibility.
- 驾驶室内设有冷暖空调、收录机、茶杯座、衣帽钩，可调式仪表台，操纵环境舒适、安全。
- The cabin features heating and air-conditioning systems, radio and cassette recorder, cup holder, coat and hat hook, adjustable instrument panel for safe and comfortable operation.
- 电子监控声光报警系统，准确监控整机运行状况。
- The electronic monitoring system keeps watch for the running of the machine and alarms the operator with sound and light signals when emergency occurs.
- 轻便的单手柄先导液压操纵，长时间操作不疲劳。
- Hydraulic pilot control gives the operator maximum control with minimum movement.
- 具有动臂举高限位功能，防止机械冲击。
- Boom kickout device stops the boom at preset height automatically to protect the operator from mechanical impact.
- 电控变速操纵手柄，控制轻松准确。
- Electric shift control offers the advantage of easy and exact operation.



冷暖空调 Heating and Air-conditioning



收录机 Radio

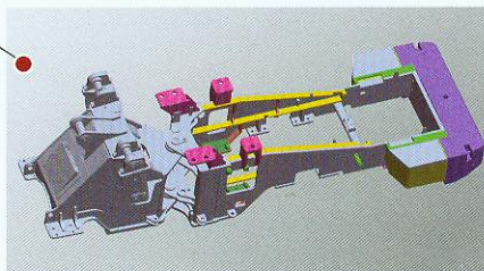


电磁限位 Solenoid Kickout

可靠的结构强度

Robust Structure

- 重载超强结构设计，板材厚，强度高。
- Heavy-duty frame structure made of strong and thick steel is designed for high loading capacity.
- 关键结构件均采用有限元分析，确保满足各类繁重工况。
- Finite element analysis is conducted in the design of key structural parts to match heavy-duty applications.
- 车架为单板框架结构，结构强度高，应力分布均匀。
- Optimized frame structure design offers increased strength with even stress distribution.



方便的维护性

Easy Serviceability

- 发动机机油放油口引出，使用方便。
- External engine oil drain port is easy for use.
- 名牌免维护电池，保证你使用无忧。
- Maintenance-free battery of famous brand is provided for safer use.
- 护罩两侧板及后护罩开闭容易，发动机及其周围零件的检查、日常保养变得非常方便。
- One-touch open-up side grilles and radiator grille provide easy access to the engine and other parts in the compartment for checks and daily maintenance.



周到的细节设计

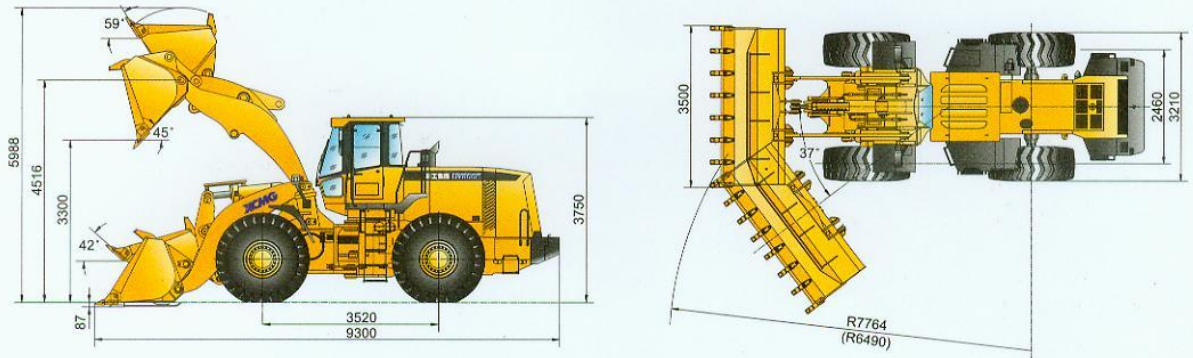
Considerate Detail Design

- 关键铰接部位采用两级防尘，有效防止黄油溢出和粉尘侵入，减少销轴磨损，延长使用寿命，降低使用和维护成本。
- Key linkage pins are sealed with lip seal and O-ring to keep grease in and abrasive dust and grit out, helping to extend service life and reduce operation and maintenance cost.
- 液压管路采用DIN标准24°锥加O型圈两道密封，彻底防漏。
- Hydraulic hoses with DIN 24° cone plus O-ring face seals provide superior, leak free performance for safer use.
- 耐磨刀板、斗齿，寿命更长。
- High abrasion cutting edge and teeth extend bucket life.
- 易磨损部位油管加装保护套，延长使用寿命，提高液压管路可靠性。
- Oil lines in locations vulnerable to wear is designed with protective sleeve to provide extended service life and enhanced reliability.



两道密封
Dual Seals

外形尺寸 Outline Dimensions



主要参数 Main Specifications

项目	Description	参数 Specifications	单位 Unit	
额定斗容量	Rated bucket capacity	4.5	m ³	
额定载重量	Rated operating load	8000	kg	
整机工作质量	Operating weight	28500	kg	
最小离地间隙	Min. ground clearance	480	mm	
最大牵引力	Max. horse power	245	kN	
最大掘起力	Max. breakout force	260	kN	
动臂提升时间	Hydraulic cycle time-raise	6.9	s	
三项和时间	Total hydraulic cycle time	11.8	s	
发动机	型号	Model	QSM11-C335	
	型式	Type	电喷、涡轮增压、空空中冷发动机 Six-cylinder, turbocharged, air-to-air after cooled, electronically controlled fuel injection	
	标定功率	Rated power	250	kW
	标定转速	Rated speed	2100	r/min
行驶速度	前进/倒退I档	F/R I speed	7/7	km/h
	前进/倒退II档	F/R II speed	11.5/11.5	km/h
	前进/倒退III档	F/R III speed	24.5/24.5	km/h
	前进IV档	F IV speed	35.5	km/h
轮胎型号	Tire model	29.5-25-22PR		

随技术进步, 产品结构、参数将不断改进, 恕不另行通知。样本信息与实物略有不符的, 以实物为准。
Structure and specification are subject to change without notice. In case there is any difference between the description of the machine and the substantial machine, the substantial machine should govern.

徐州工程机械科技股份有限公司
XUZHOU CONSTRUCTION MACHINERY SCIENCE & TECHNOLOGY CO., LTD.

地址: 江苏省徐州市金山桥经济开发区桃山路1号
邮编(Post): 221004
Add: NO. 1, Taoshan Road, Economic Development Zone of JinshanQiao, Xuzhou City, Jiangsu Province, P.R. China.